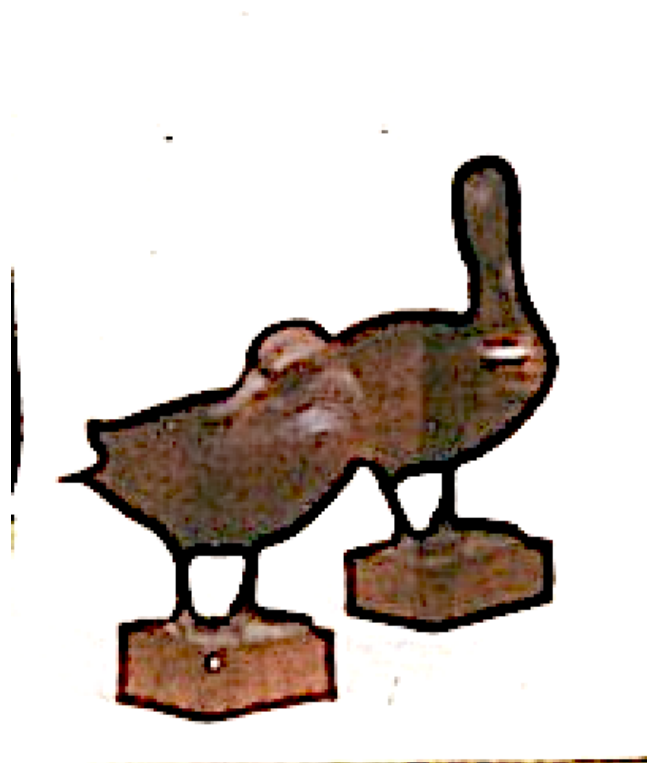
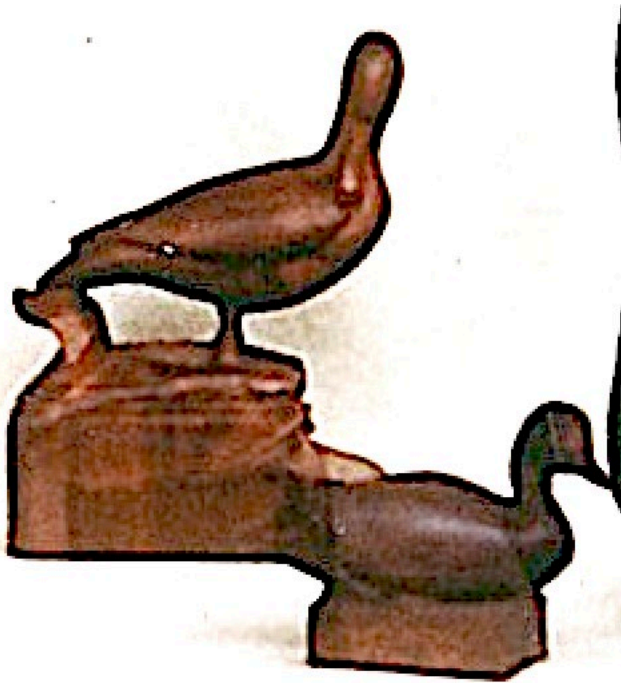


25 April 2026

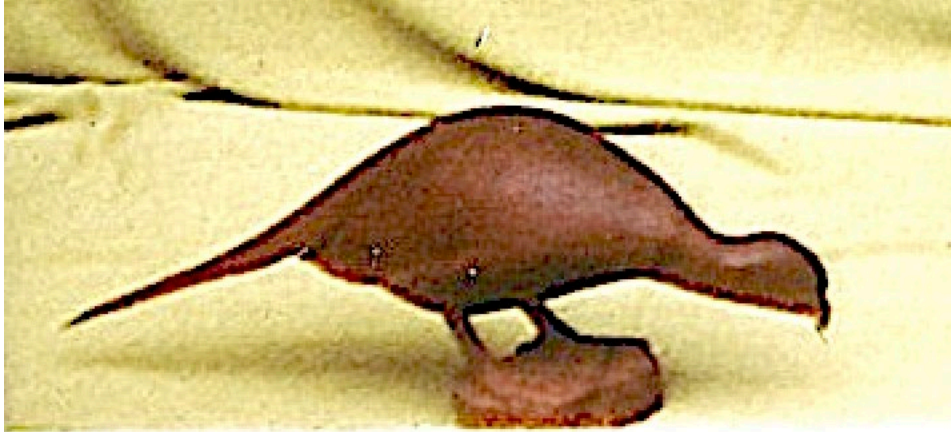
**Chippy Chase's sculptures created in the 1940s and 1950s for which we have no number or date. The black and white photography indicates the time period of the 1940s and 1950s. These photographs and sculptures are enumerated by U and a number.**



U17 and U18, Standing Ducks, probably late 1930 or early 1940s.



U19 Sitting Duck, probably late 1930s or early 1940s.



U21 Male Pheasant, probably 1940s, in 1958 Wiscasset Exhibition.



U22 Male Pheasant, probably 1940s, in 1958 Wiscasset Exhibition.



U23 Male Pheasant, probably 1940s, in Wiscasset Exhibition.



U24 Ruffed Grouse, probably 1940s, in 1958 Wiscasset Exhibition.



---

U01 Sparrow Hawk, late 1940s or early 1950s.



U02 Owl, 1940s, included in 1949 American Museum of Natural History Exhibition.



U08 Flamingo, probably late 1940s.



U09 Cormorant on buoy, probably late 1940s, and shiny wood is probably Ebony.



U10 Soaring Seabird on cured wave, probably late 1940s.



U11 Seagull on wave bill touching wave, probably late 1940s.



U12 Seagull on wave with tail touching wave, probably late 1940s.



U14 Male Pheasant taking flight feet touching plant leaf and tail touching base, probably late 1940s.



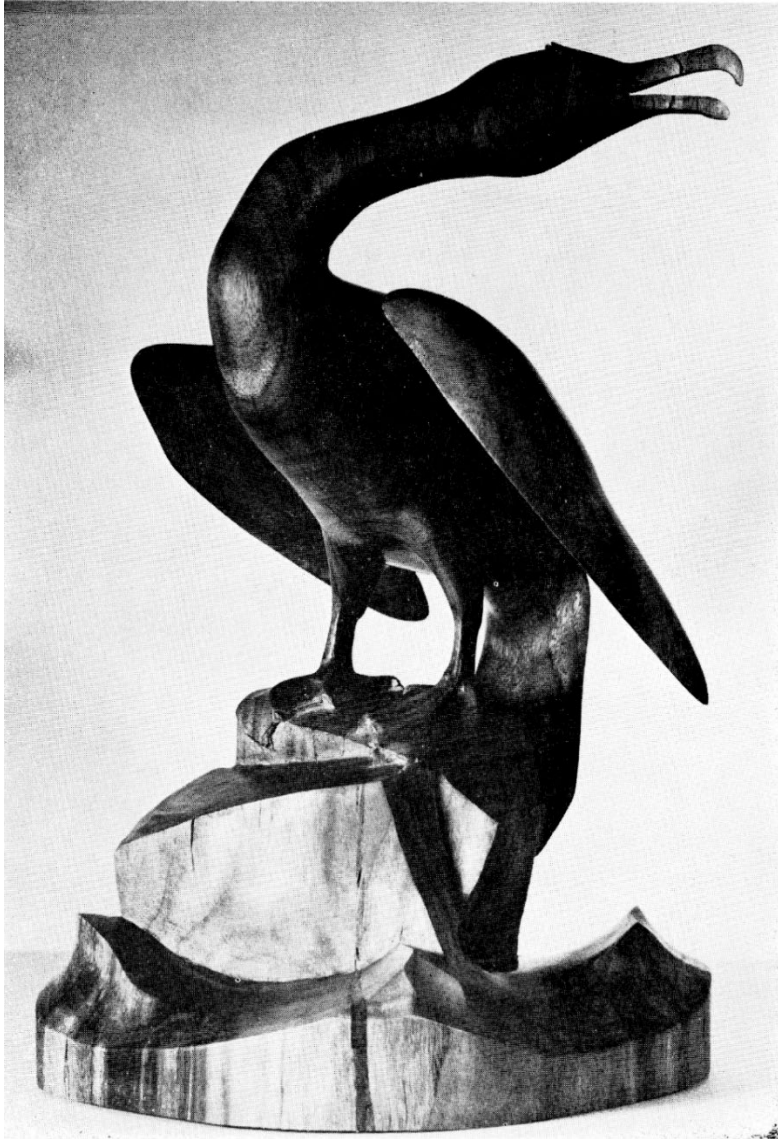
U15 Ruffed Grouse with tail fanned, late 1940s or early 1950s.



U16 Duck taking off, wings extending upward, feet touching round base, the black shiny wood is probably Ebony, 1940s.



U25 Ruffed Grouse standing on log, square base, 1940s.



U26 Cormorant standing on rock surrounded by waves, Black Walnut, 1950s, and included in Down East's magazine story of 1961.



U28 Canada Goose taking flight, cattail leaf blade touching tail. The size and cattail leaf structure indicates late 1950s style and composition. This sculpture was included in Down East's magazine story of 1961.



U29 Osprey with fish on wave. The size and sophistication of this sculptures indicates a late 1950s date of completion.



U30 Curlew standing on round base with wings out stretched. The simplicity of the sculpture indicates 1940s creation.



U31 Puffin standing on angular rock, the size of this sculpture and angular rock indicating late 1950s creation.



U32 Heron, The size of this sculpture with simple base indicated 1950s creation.



U33 Anhinga The size and sophistication of this sculpture indicates late 1950s, and the black shiny wood is probably Ebony.



U34 Bufflehead Duck taking flight, on round mounted base, probably created in the 1940s.



U35 Fantail Grouse



U35 Duck flying over waves, the sophistication of this sculpture along with the curves of the polished waves indicates mid to late 1950s.



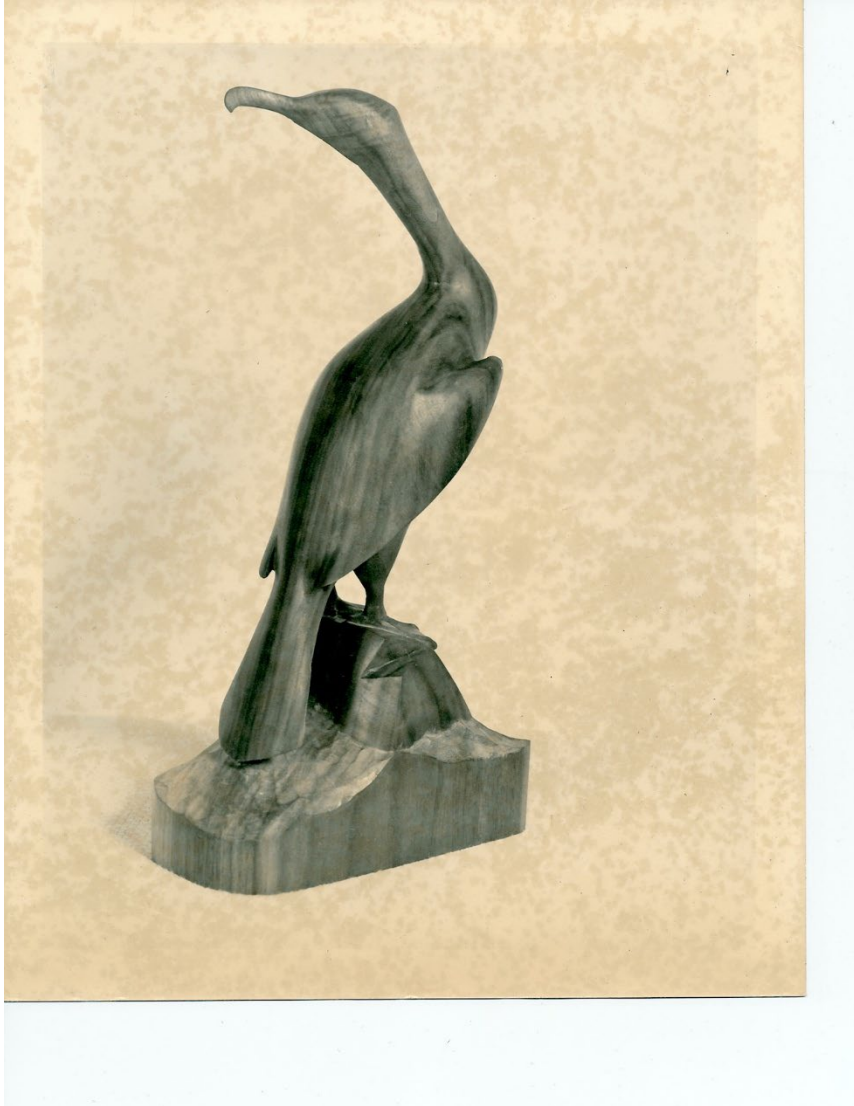
U37 Eagle standing on stump with square base, probably 1940s sculpture, and the black shiny wood is probably Ebony, and created in 1940s.



U38 Hawk standing on stump in square base, probably created in 1940s.



U39 Ruffed Grouse standing on circular base with wave-like features on round base, probably late 1940s or early 1950s.



U41 Cormorant stand on angular rock surrounded by waves of chisel cuts, probably mid 1950s.



U42 Duck landing on waves that are sanded and polished, tail touching base. A more sophisticated design and sculpture than similar “duck landing” U07 that was in 1949 AMNH exhibition. Probably created in late 1950s.



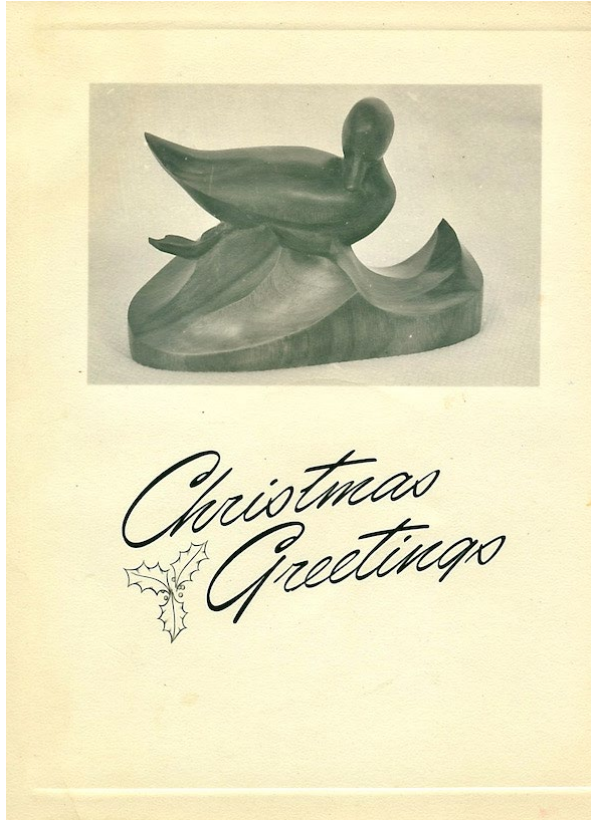
U43 Hawk attacking Ruffed Grouse, on rectangular base, probably early to mid 1950s.



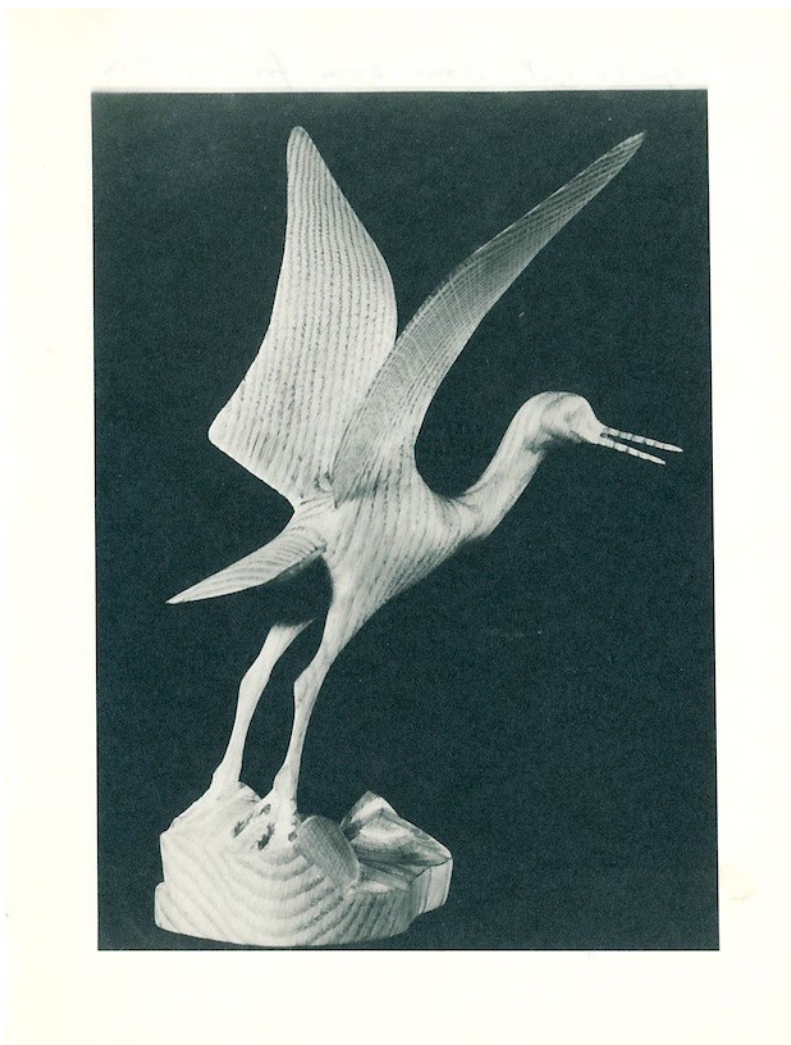
U44 Dovekie soaring over simple wave in rectangular base, similar design but different shape of wave from U04 exhibited at AMNH in 1949. Probably created in 1949s.



U45 Soaring vulture mobile, one of two mobiles that we know of that Chippy created.



U47 Duck on wave. This is one of Chippy's first Christmas card with one of his sculptures, probably 1950s.



U Yellow legs in oak wood with round base with polished waves, probably created in 1940s.

